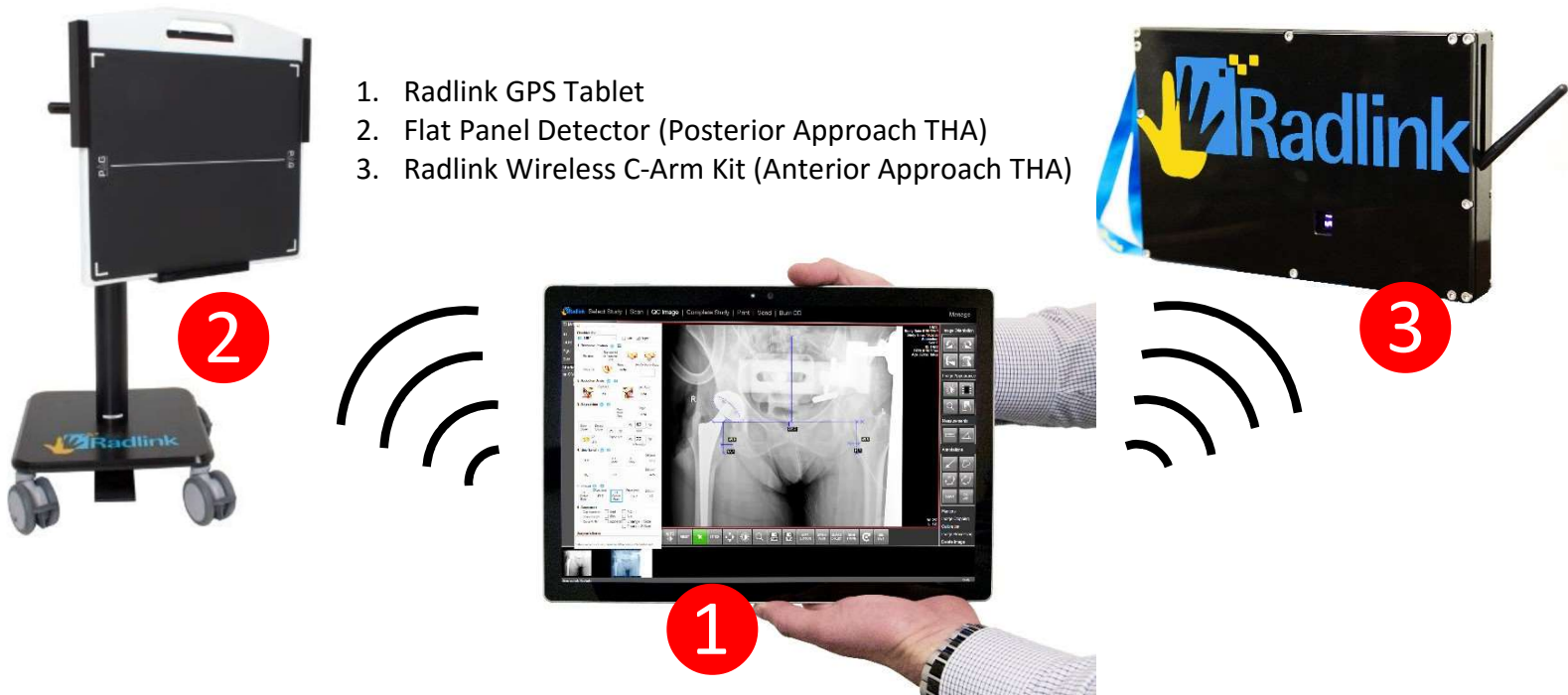


Radlink GPS Tablet Quick Start User Guide

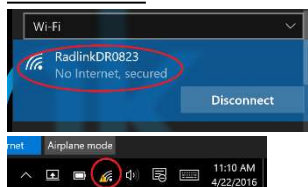


INSTRUCTIONS:

1. Power On PerkinElmer Panel or Wireless C-Arm Kit

2. Connect "Wi-Fi" Network (NOTE: Do not select "Wifi 2" or "Wifi 3")

POSTERIOR: RadlinkDRxxxx

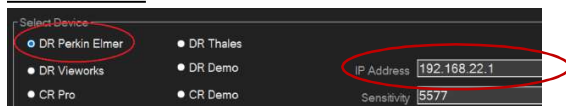


ANTERIOR: RadlinkWCAxxxx



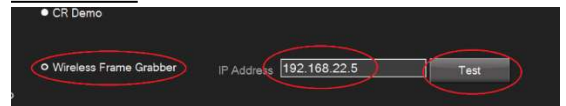
3. Open Radlink Pro Imaging software. Click "Manage" in upper right hand corner.

POSTERIOR:



Select "DR Perkin Elmer". Verify IP address. Click "Save Settings"

ANTERIOR:



Select "Wireless Frame Grabber" and verify IP address "192.168.22.5". Click "Test". Click "OK". Click "Save Settings"

4. Select Patient

POSTERIOR: Proceed to the "SCAN" window

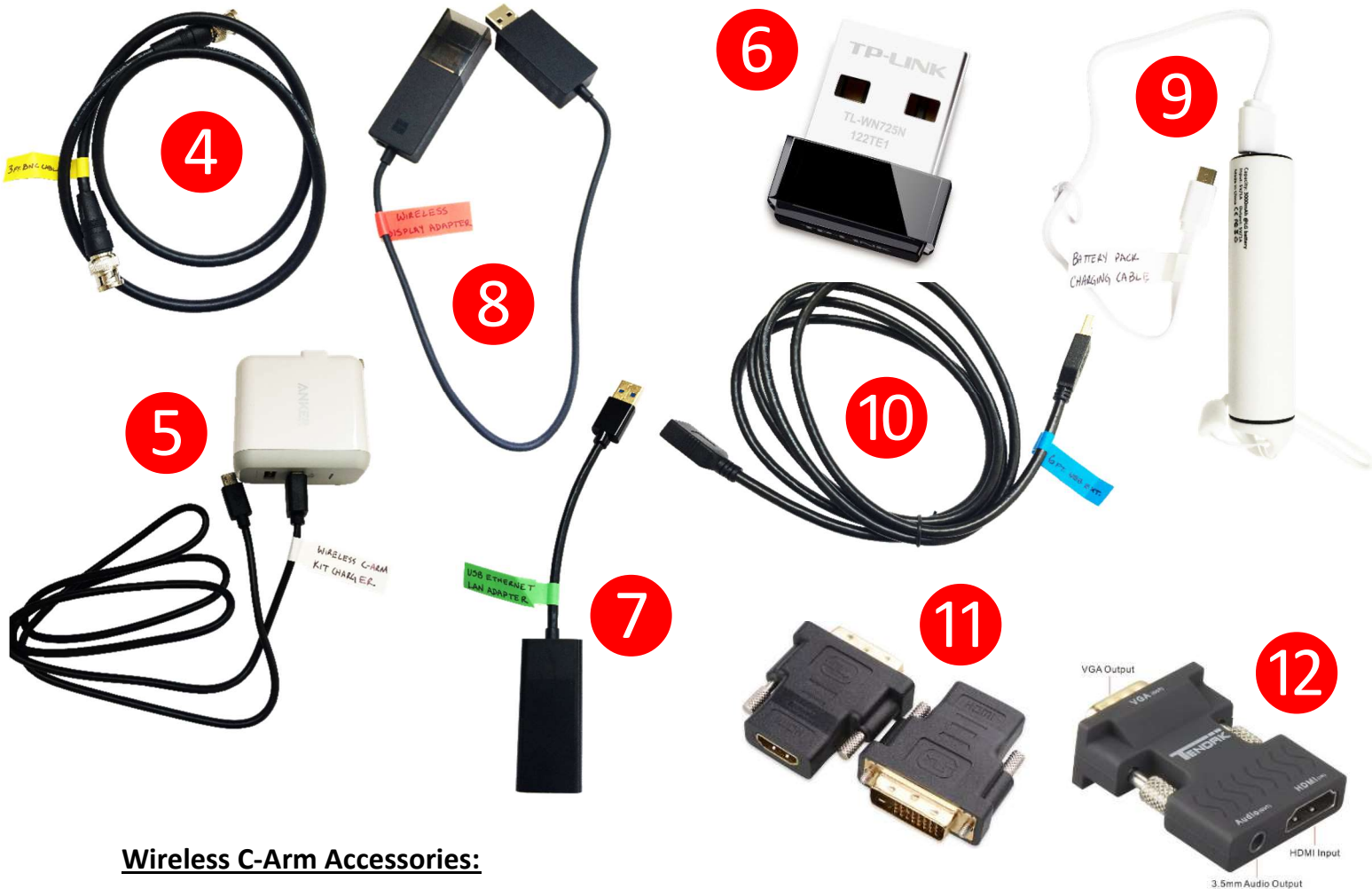
ANTERIOR: Click "QC Image"

5. Acquire image

POSTERIOR: Press "Start DR", See Green bar, Shoot X-ray

ANTERIOR: Acquire to C-Arm, Press "Grab Frame"

Accessories and Connectivity Instructions



Wireless C-Arm Accessories:

4. 3 Ft. BNC Cable (Yellow Tag) – **Connect to C-Arm**
5. Wireless C-Arm Battery Charger Cable (White Tag) and Charger Block – **Power Charger**

GPS Tablet Accessories:

6. Tablet Wireless LAN Adapter – **Push to PACS via Wi-Fi**
7. USB Ethernet LAN Adapter (Green Tag) – **Push to PACS via Hard-Wire**
8. Microsoft Wireless Display Adapter (Red Tag) – **Primary Adapter**

Display Power Adapters:

9. Wireless Display Adapter Battery Block and Battery Cable (White Tag) – **Free-standing Power source**
10. 6 Ft. USB 3.0 Extension Cable (Blue Tag) – **USB Power source**

Video Converters:

11. DVI to HDMI Converter – **Monitor isn't HDMI Connector**
12. VGA to HDMI Converter – **Monitor isn't HDMI Connector**